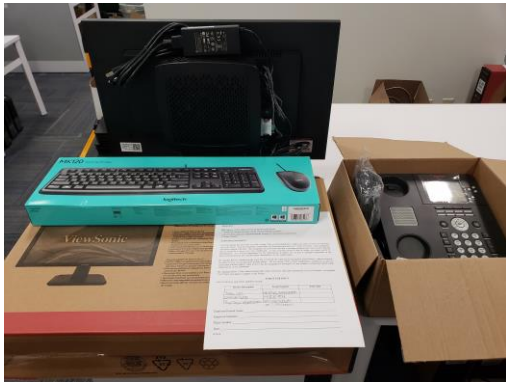


Work From Home – iGel Setup With Hard Phone



Your Work From Home Kit includes two monitors (one monitor has iGel attached to back), keyboard, mouse, hard phone, Avaya Power Box to connect phone to router, headset, and cables.

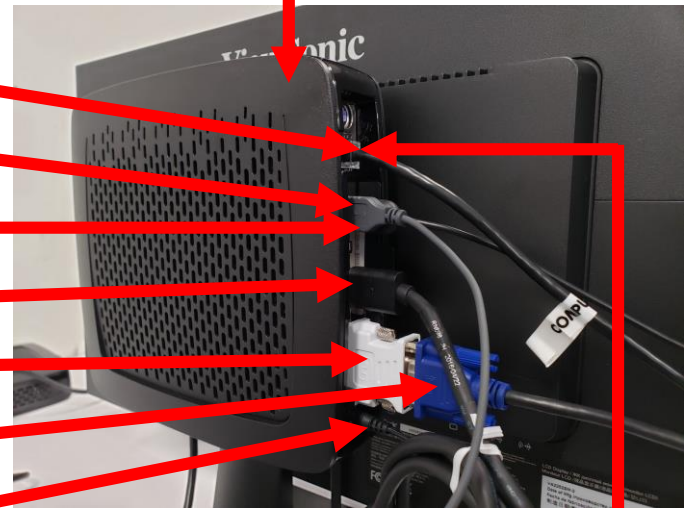
Step 1: Unpack everything and prepare for setup in close proximity to your Router.

Step 2: Connect cables to back of iGel.

*Some setups will be as shown (White DVI adapter already connected with VGA cable ready to attach), but some setups will just have one DVI cable that plugs directly into the iGel where you see the White DVI adapter.

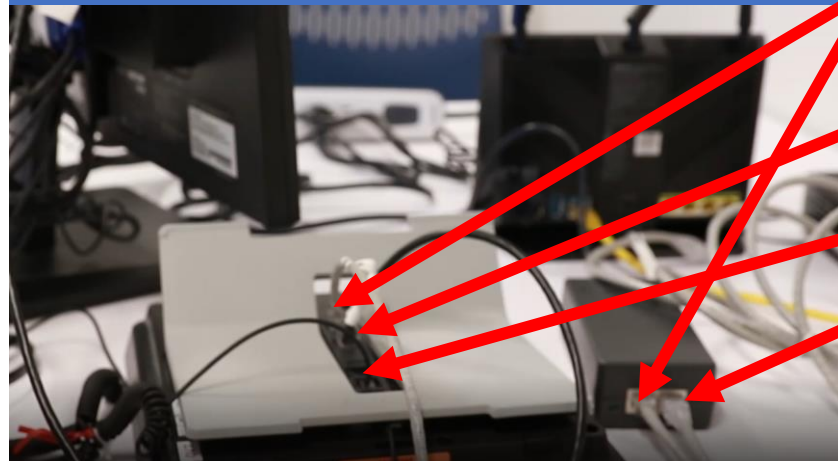
- Phone Cable
- Mouse (USB)
- Keyboard (USB)
- Monitor (Display Port)
- *Monitor (DVI)
- *Monitor (VGA)
- Power Cord

iGel connected to back of Monitor



Step 3: Connect cables to Phone, Router & Avaya Power Box.

Back of Phone



Avaya Power Box Connection
(Top Connection)

iGel Phone Connection
(2nd from top)

Cable connect to provided Headset

Avaya Power Box to Router

LAN (All 4)



WAN

Back of Router

Finished Setup



*Your Router may look slightly different, but there will be one port that is your WAN (your Internet Connection already in use) and multiple LAN ports. You can use any open LAN port.